



**IMPROVE SAFETY,
PRODUCTIVITY AND
EFFICIENCY AT THE LOADING
DOCK**

**WITH A DOCK LIFT DESIGNED
AND MANUFACTURED BY**



Specified by the United States Postal Service

SYSTEM FEATURES

- **Filtration System:** Full hydraulic system filtration for contamination free lift operation. Eliminates the primary cause of equipment service and maintenance needs.
- **Double Acting-Cylinders:** Precision double-acting system is more efficient, provides longer Lift life.
- **Totally Enclosed Hydraulic System:** Guards against environmental contaminations.
- **Fully Hydraulic Operation:** All Lift functions under positive hydraulic control via automatic hydraulic circuit.
- **Safety Valving:** Lifting cylinder safety valving limits freefall to less than 3" in the event of hydraulic fluid loss.
- **Automatic Lift Positioning:** Lift can be positioned to desired height of stopped on command via pushbutton control.
- **Upper Travel Limit Switch:** Limits maximum upward travel.
- **Regenerative Hydraulic System:** Eliminates regular lubrication and maintenance needs.

Overview:

Using leading edge hydraulic technology, Atlantic's engineering staff has been designing lifting/leveling equipment with advanced operational and safety features for more than 25 years. Atlantic has led the Industry in providing cost efficient, quality products. This experience and performance history assures the best value for your purchase dollar.

Recognizing that contamination of the hydraulic system can cause high service and maintenance costs with other lift systems, Atlantic developed it's full filtration system. This exclusive system enhanced by a totally enclosed motor pump system provides a contamination free hydraulic environment.

Atlantic's exclusive double-acting cylinder system, speeds lift operation, minimizes wear of cylinders and seals and overall provides a more efficient operation.

SPECIFICATIONS: "PD" SERIES

General Description: The "PD" Port-A-Dok Series Hydraulic Dock Lift, as manufactured by Atlantic Engineered Products, L.L.C., is self contained and requires no installation. Unit can be completely mobile to allow easy relocation with additional detachable dolly. Lift functions are fully hydraulic via an automatic hydraulic circuit. Hydraulic system is controlled by a pendant control station, provided.

DIMENSIONS & MODELS

Model	Size	Capacity
PD-664	6' X 6'	4,000#
PD-665	6' X 6'	5,000#
PD-684	6' X 8'	4,000#
PD-685	6' X 8'	5,000#
PD-784	7' X 8'	4,000#
PD-785	7' X 8'	5,000#

Operation: Fully-hydraulic operation of all functions via push-button control. The attendant pushes the "up" or "down" button to position the platform to the desired height. Release of the button will stop Lift movement.

Construction: Platform, bridge and pre-ramp is constructed of high yield 55,000 PSI type safety tread steel plate. Platform is a welded bridge-type structure with structural steel supports and full perimeter frame. Bridge is 18" x 60", to be positioned with lift chains. 30" X 60" pre-ramp is hinged for safety and unit movement. Base frame is constructed of structural steel weldment. Scissor arms are solid steel bars mounted with lifetime-lubricated bushings. Unit shall include fixed safety railings on one side, with safety chains at ends (railing removable upon request prior to fabrication). Motor housing protects workers and freight from droop-off on opposite side. Railing includes mid-rail and toe-board. Motor housing fully enclosed with removable access panels both sides. Maintenance supports included standard. Portage rollers are standard. Wheeled dolly is available.

Hydraulics: The self-contained hydraulic motor pump unit shall provide hydraulic power for all operations. Industrial grade hydraulic cylinders raise lift with safety valving to limit freefall to less than 3" if fluid control is lost.

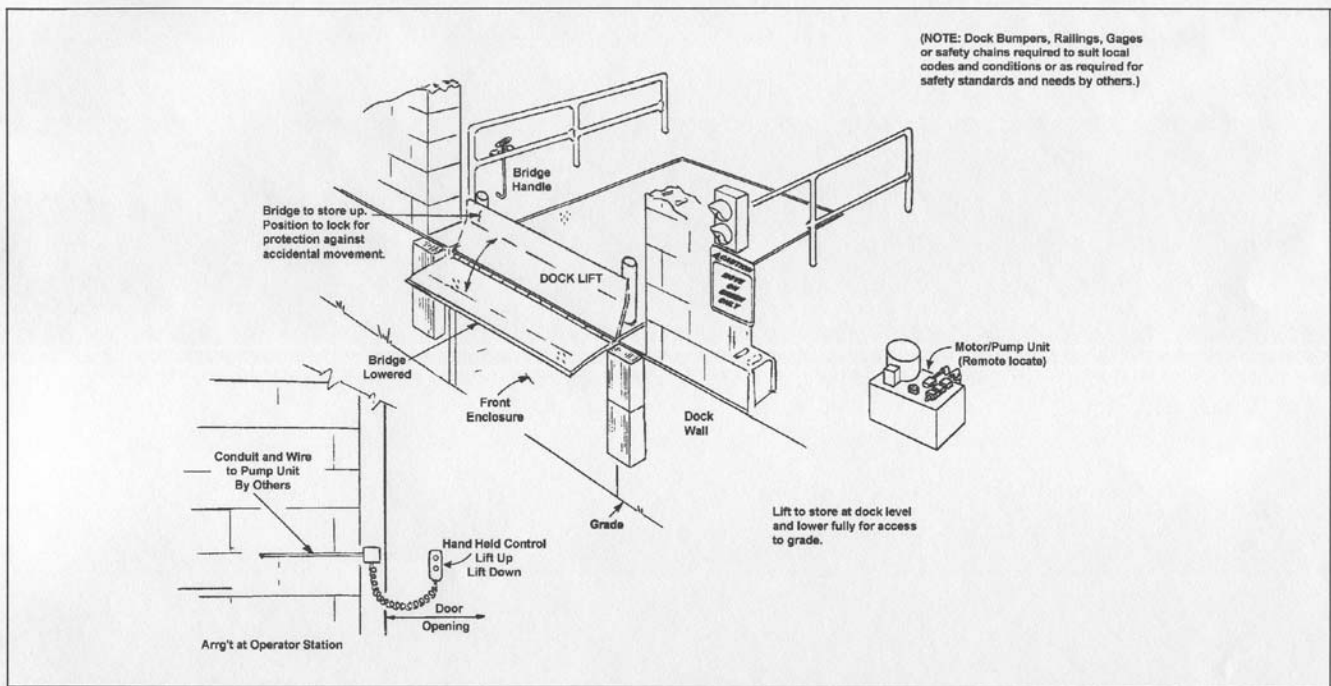
Electrical: Pre-wired plug-in push-button control station to control all functions of Lift. Operator station meets NEMA requirements for internal or external use. Totally enclosed motor is rated at 115V/230V, single phase or 208/230V-460V three phase. Wiring from Lift Motor Controller on 15-foot lead, furnished.

Safety Consideration:

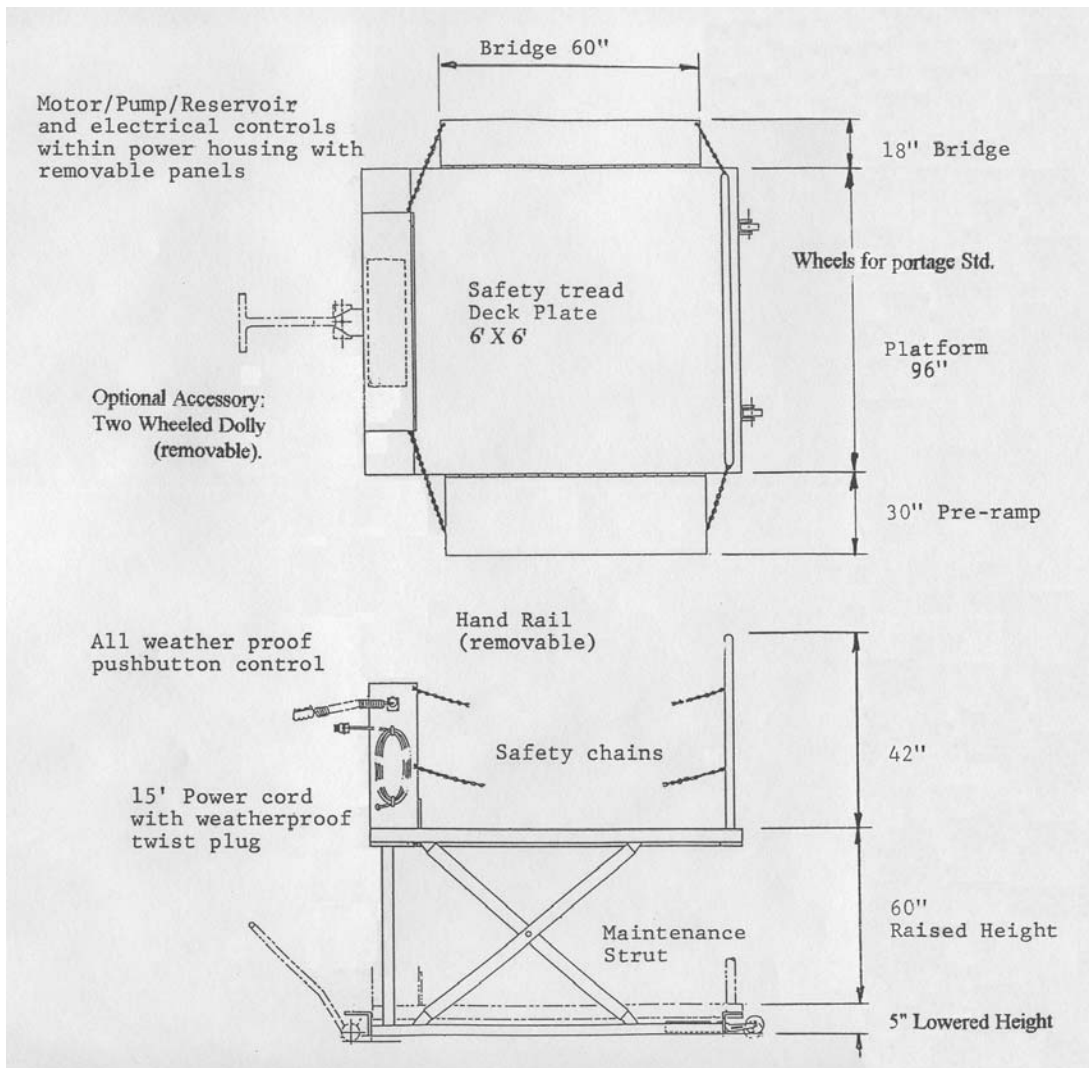
- Fully-hydraulic Operation
- Safety Velocity Fuses On All Cylinders
- Upper Travel Limit Switch
- Maintenance Supports
- Safety Railings w/Chains
- Pre-tested, Factory Adjusted

Warranty: Coverage provided for one (1) full year from date of installation. Atlantic Engineered Products, L.L.C. will exchange or repair any hydraulic or structural component if found to be defective in manufacture. Dock Lift to meet or exceed OSHA, CS202-56, and all Industrial standards.

Atlantic Engineered Products, L.L.C. reserves the right to alter details without prior notice or incurring obligation.



PROJECT NAME				GENERAL ARRANGEMENT DOCK LIFT FOR ELEVATED DOCK	
PROJECT LOCATION:	ARCHITECT/ENGINEER:				
DRAWN BY REP II		DATE 5/7/94	CHECKED BY	SCALE None	DRAWING NUMBER HDL-001-4
MACHINED PARTS FABRICATED PARTS		TOLERANCES UNLESS SPECIFIED ± 1/16" 3 DECIMAL PLACES ± 1/8" ANGLES		± 0.005 ± 30'	



OPERATION:

Atlantic Lifts are furnished with constant pressure ("deadman" type) push-button controls. Depressing the "Up" (or Raise) control starts the motor which runs the hydraulic pump. The cylinders begin to extend and the platform starts to rise. The platform will rise as long as the "Up" control is depressed. Upon releasing the control the platform ceases to rise and will remain at that elevation.

Depressing the "Down" (of Lower) control, the Down Solenoid Valve is energized. The cylinders start retracting as the oil returns to the reservoir and upon releasing the control, the platform ceases to lower, remaining at the elevation.

In the event that the Lift is overloaded, the relief valve will open and oil will bypass into the reservoir. When the Lift reaches its full vertical travel the preset limit switch will be activated. This shuts off the power to the motor. When in this condition, depressing the "Up" button will have no effect. The platform will remain stationary at this elevation.

The motor turns only when the "Up" button is depressed and the Down Solenoid valve is energized only when the "Down" button is depressed.

SPECIFICATIONS:

Capacity:	4,000 Lbs.
Axle Capacity Sides:	2,000 Lbs.
Axle Capacity Ends:	2,000 Lbs.
Platform Size:	6' X 6'
Lowered Height:	5"
Raised Height:	60"
Speed (Loaded):	12 FPM
Horsepower:	2
Motor:	115V/1/60; 230V/1/60 or 230V/3/60; 460V/3/60

**HPD-664
Hydraulic Port-A-Dock Scissor Lift
For U.S. Postal Service**