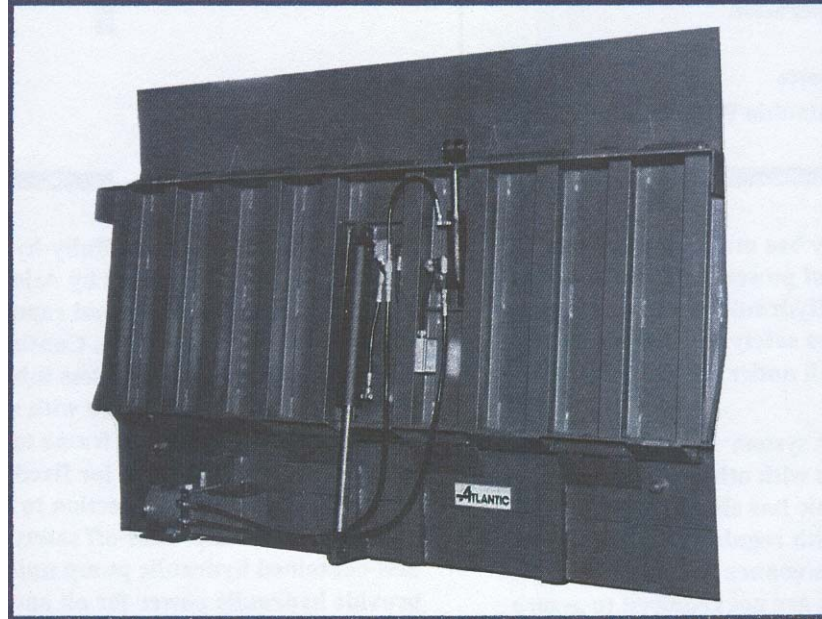


**SIMPLY THE BEST...
SAFER, FASTER, OUTWORKS THE REST**



FEATURES

FULLY HYDRAULIC OPERATION

Eliminates ergonomic problems

PUSH-BUTTON ACTIVATION

Efficient and simple control

FIXED POSITION OR TRACK MOUNT

Accommodates all loading requirements

NO MAINTENANCE SCHEDULE NEEDED

No downtime & service costs for regular maintenance needs

NO MANUAL HANDLING

Protects against accident/personal injury

STRUCTURAL STEEL BEAM SUPPORTS

Provide superior structural integrity

AUTOMATIC RAMP LOCK

Hydraulically locks ramp in stored position

FULL WIDTH HINGES

Extra support where leveler abuse is experienced

PERFORMANCE, SAFETY AND VALUE

HYDRAULIC SYSTEM COMPARISON

**Benefits Of
Atlantic Self-lubricating, Regenerative System**

Speeds Leveler Operation
Minimizes Wear of Cylinder and Seals
Eliminates Major Causes of Hydraulic Leaks
Offers Consistent Fluid Operation
Extends Equipment Life
Minimizes Maintenance Costs
Allows Functions Not Obtainable With Other Systems

**Benefits Of
Single-acting or Non-regenerative System
by others**



Overview:

Hydraulics is a reliable and cost effective source of power. Atlantic has used this technology to design their Hydraulic Rail Dock Leveler with a specific operational system, which controls *all* leveler functions and provides advanced performance and safety features.

The regenerative hydraulic system requires no lubrication of moving parts as with other systems or mechanical equipment. Atlantic has eliminated downtime and service costs associated with dock leveler maintenance. Preventative maintenance programs and maintenance/service contracts are not required to assure proper operation.

Atlantic's Hydraulic Rail Dock Leveler stores and locks in upright position. The lock is hydraulically released via remote mounted, push-button control. Automatic hydraulics power ramp down, power and ramp up, power extend and retract lip. Additionally the ramp can be stopped in any position to provide an extra measure of safety. Leveler is designed for mounting to dock face for fixed position operation of on slide rails to allow lateral positioning of ramp.

SPECIFICATIONS: “HRL” SERIES

General Description: The “HRL” Heavy-Duty Series Hydraulic Rail Dock Leveler, as manufactured by Atlantic Engineered Products, L.L.C., has a fully automatic hydraulic operation with complete control of main ramp and lip sections. Regenerative hydraulic system requires no regular maintenance or lubrication to assure operation. Ramp automatically locks in upright over-center stored position. Rail leveler will accommodate rail car widths from 9’4” minimum to 10’8” maximum.

<u>DIMENSIONS & MODELS</u>		
Model	Width	Length
HRL8606	6’	6’6”
HRL8607	7’	7’6”
HRL8608	8’	8’6”
HRL9006	6’	6’6”
HRL9007	7’	7’6”
HRL9008	8’	8’6”
HRL9606	6’	6’6”
HRL9607	7’	7’6”
HRL9608	8’	8’6”

Capacity range for all models to 45,000 lbs. For information on other sizes or capacities, consult factory.

Operation: Fully-automatic hydraulic system provides all movement of ramp and lip. Activated via remote push-button control, ramp can be lowered with lip extended for normal loading operations or lowered with lip retracted for end load operation. Ramp is stored and locked in vertical position by push-button command. Ramp movement is stopped in any position from push-button station. All functions automated.

Construction: Ramp and lip are constructed of high yield 55,000 PSI type safety tread steel plate. Ramp is welded, bridge-type structure with structural steel beam deck supports, providing minimum 18” face contact with deck plate. Deck supports are secured between full width header plates, front and rear. Continuous spool-type hinges are seamless tube. Standard lip is 16”. Hinge shafts is one-piece cold drawn steel, full width. Ramp mounting plate designed to weld to imbedded channels in the dock face for fixed position operation or to mount on slide rails, which allows lateral positioning of ramp.

Hydraulics: The self-contained hydraulic pump unit with 1hp totally enclosed motor shall provide hydraulic power for all operations. Separate hydraulic cylinders operate ramp and lip individually. During operation, automatic valving shall control functions of leveler thru a regenerative hydraulic circuit. Automatic hydraulics to power ramp down, power ramp up, power extended and power retracted lip.

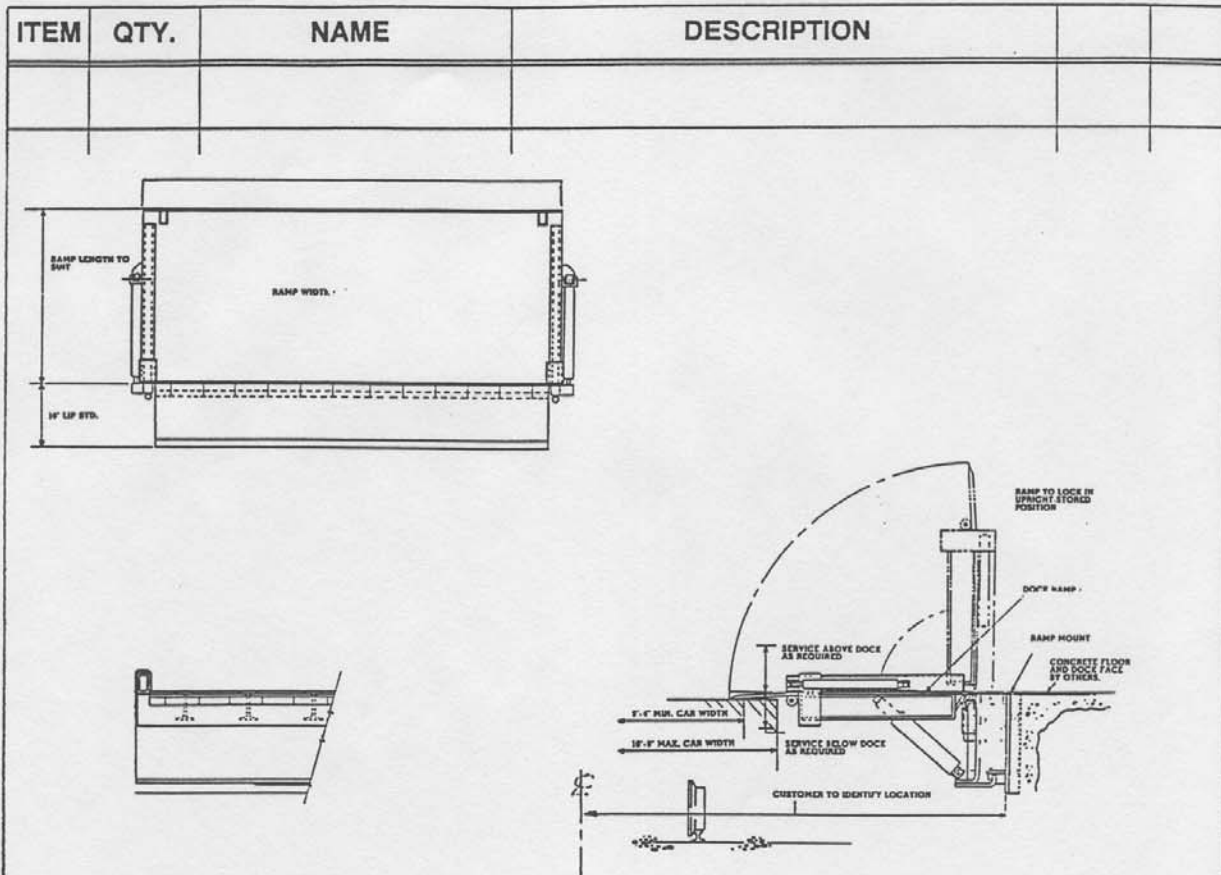
Electrical: Pre-wired push-button station to control all functions of leveler. Operator station is housed in a gasketed enclosure, which meets NEMA requirements for internal or external use. Totally enclosed motor is rated at 115V-230V single phase or 208/230V-460V three phase. Wiring from push-button station to motor junction box and power source, by others.

Safety Consideration:

- Fully-automatic Hydraulic Operation
- Push-button Safety Stop
- Automatic Storage Lock
- Run-off Safety Curbs
- Pre-tested, Factory Adjusted

Warranty: Coverage provided for five (5) full years from date of installation. Atlantic Engineered Products, L.L.C. will exchange or repair any hydraulic or structural component if found to be defective in manufacture. Dock leveler to meet or exceed OSHA, CS202-56, ANSI MH14.1-84 and ANSI MH30.1-93 standard.

Atlantic Engineered Products, L.L.C. reserves the right to alter details without prior notice or incurring obligation.



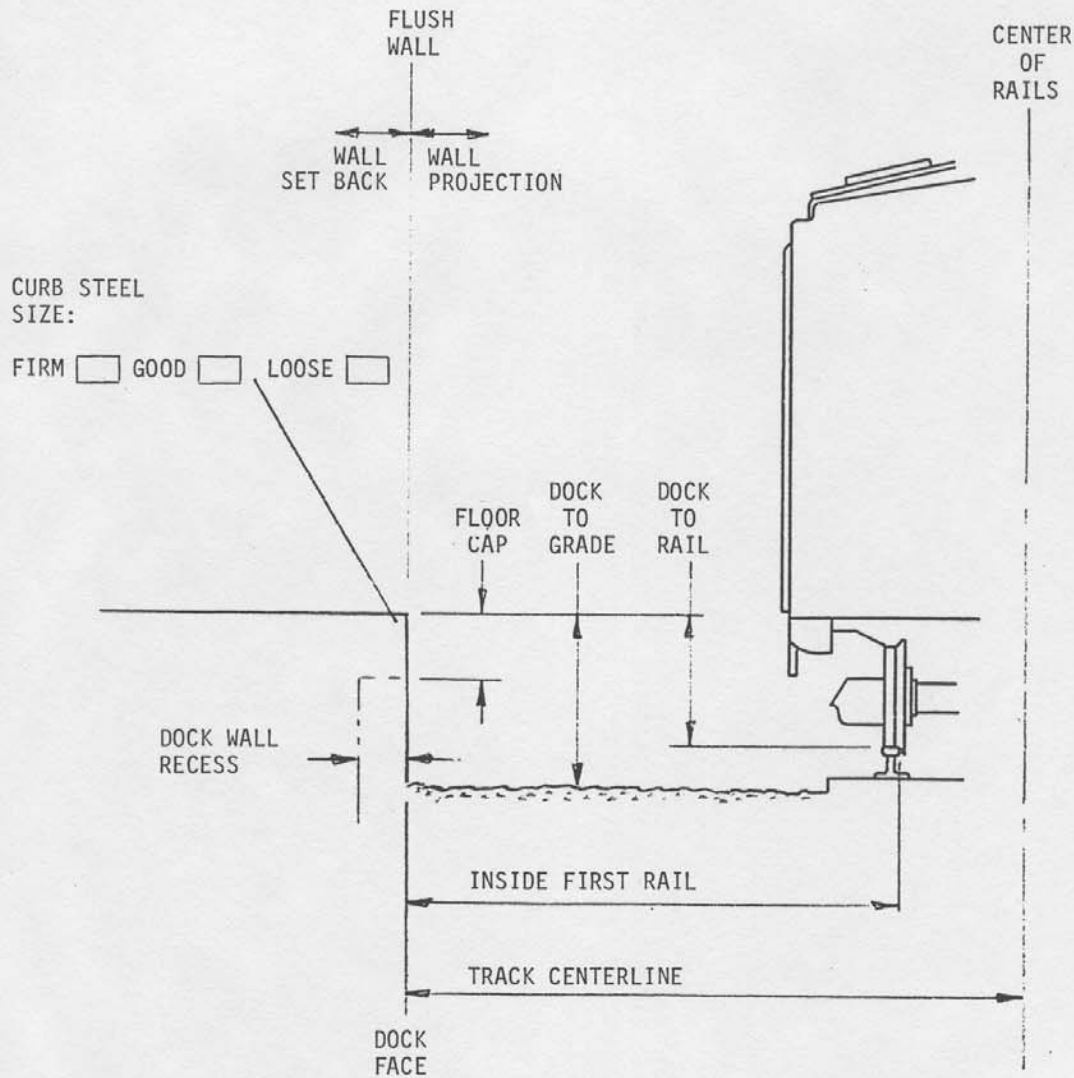
DIMENSIONS AND MODELS:

MODEL	SPECIFY CAPACITY	RAMP WIDTH (Usable)	RAMP WIDTH (Overall)	RAIL CENTERLINE *
HRL8606	25,000#	6'	6'-6"	8'-6"
HRL8607	35,000#	7'	7'-6"	8'-6"
HRL8608	45,000#	8'	8'-6"	8'-6"
HRL9006		6'	6'-6"	9'-0"
HRL9007		7'	7'-6"	9'-0"
HRL9008		8'	8'-6"	9'-0"
HRL9606		6'	6'-6"	9'-6"
HRL9607		7'	7'-6"	9'-6"
HRL9608		8'	8'-6"	9'-6"

*Ramp Length is determined by Rail Centerline

				GENERAL ARRANGEMENT HYDRAULIC RAIL DOCK LEVELER	
DRAWN BY REP II	DATE 12/10/85	CHECKED BY	SCALE NONE	DRAWING NUMBER HRL-002-1	
TOLERANCES UNLESS SPECIFIED					
MACHINED PARTS	± 1/64"	3 DECIMAL PLACES	± 0.005		
FABRICATED PARTS	± 1/32"	ANGLES	± 30'		

ITEM	QTY.	NAME	DESCRIPTION
------	------	------	-------------



If Track Curves, measure at door opening and 20 ft., each side of opening.



**RAIL RAMP FIELD DATA
YARD CONDITIONS**

DRAWN BY	DATE	CHECKED BY	SCALE
----------	------	------------	-------

TOLERANCES UNLESS SPECIFIED

MACHINED PARTS	± 1/64"	3 DECIMAL PLACES	± 0.005
FABRICATED PARTS	± 1/32"	ANGLES	± 30'

DRAWING NUMBER	
----------------	--