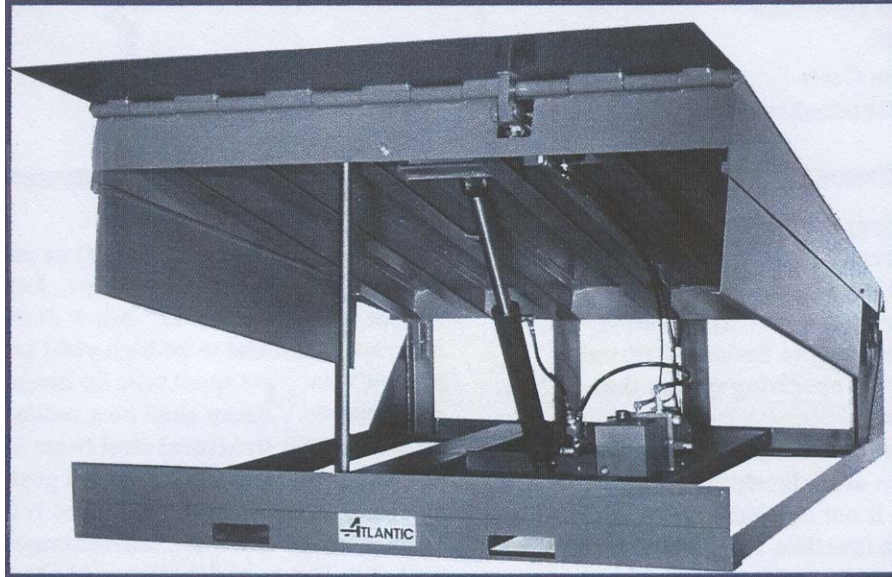


**SIMPLY THE BEST...
SAFER, FASTER, OUTWORKS THE REST**



Military tested to exceed manufacturer's promotions for safety & performance.

FEATURES

FULLY HYDRAULIC OPERATION

Eliminates ergonomic problems

PUSH-BUTTON ACTIVATION

Efficient and simple control

QUICK CYCLE TIME

Provides efficient loading operations

NO MAINTENANCE SCHEDULE NEEDED

No downtime & service costs for regular maintenance needs

NO MANUAL HANDLING

Protects against accident/personal injury

STRUCTURAL STEEL BEAM SUPPORTS

Provide superior structural integrity

STRUCTURAL STEEL BASE FRAME


Provides a sound bridge structure

FULL WIDTH HINGES

Extra support where leveler abuse is experienced

PERFORMANCE, SAFETY AND VALUE

HYDRAULIC SYSTEM COMPARISON

<u>Benefits Of Atlantic Self-lubricating, Regenerative System</u>	<u>Benefits Of Single-acting or Non-regenerative System by others</u>
Speeds Leveler Operation Minimizes Wear of Cylinder and Seals Eliminates Major Causes of Hydraulic Leaks Offers Consistent Fluid Operation Extends Equipment Life Minimizes Maintenance Costs Allows Functions Not Obtainable With Other Systems	

Overview:

Hydraulics is a reliable and cost effective source of power allowing advanced operational and safety features to be designed into any machine incorporating a moving structure. Atlantic has used this technology to design a hydraulic dock leveler with a specific operational system, which controls *all* leveler functions and provides advanced performance and safety features.

Recognizing that loss of electricity can cancel emergency stop features on other leveler systems, Atlantic's emergency stop is not dependent on electrical current nor is it a separate function. Atlantic's hydraulic valving system provides this function automatically. No extra buttons to push, no optional "add on" costs.

The regenerative hydraulic system requires no lubrication of moving parts as with other systems or mechanical equipment. Atlantic has eliminated downtime and service costs associated with dock leveler maintenance. Preventative maintenance programs and maintenance/service contracts are not required to assure proper operation.

SPECIFICATIONS: "HS" SERIES

General Description: The "HS" Standard Series Hydraulic Dock Leveler, as manufactured by Atlantic Engineered Products, L.L.C., has a fully-automatic hydraulic operation with complete control of main ramp and lip sections. Regenerative hydraulic system requires no regular maintenance or lubrication to assure operation.

DIMENSIONS & MODELS

Model	Width	Length
HS66	6'	6'
HS68	6'	8'
HS61	6'	10'
HS76	7'	6'
HS78	7'	8'
HS71	7'	10'

Capacity range for all models to 40,000 lbs. For information on other sizes or capacities, consult factory.

Operation: Fully-automatic hydraulic system individually raises ramp and extends lip via a remote push-button control. Upon release of button, ramp will lower and the lip will come to rest on truck bed. When service is completed, ramp and lip will automatically return to stored position. The push-button control shall also return ramp and lip to stored position while truck remains at dock. Standard operating range is 12" above and 12" below dock level.

Construction: Ramp and lip are constructed of high yield 55,000 PSI type safety tread steel plate. Deck plate thickness is 1/4". The ramp is a welded, bridge-type structure with structural steel supports. Continuous spool type lip hinge is seamless tube. Hinge shafts are one-piece cold drawn steel, full width. Standard lip is 16". Base frame construction is structural steel weldment with gusseted rear uprights and hinge shelf. Ramp is designed to cant 4" with out-of-level truck beds.

Hydraulics: The self-contained hydraulic pump unit with 1hp totally enclosed motor shall provide hydraulic power for all operations. Separate hydraulic cylinders operate ramp and lip individually. During operation, automatic valving shall control functions of leveler thru a regenerative hydraulic circuit.

Electrical: Pre-wired push-button station to control all functions of leveler. Operator station is housed in a gasketed enclosure, which meets NEMA requirements for internal or external use. Totally enclosed motor is rated at 115V-230V single phase or 208/230V-460V three phase. Wiring from push-button station to motor junction box and power source, by others.

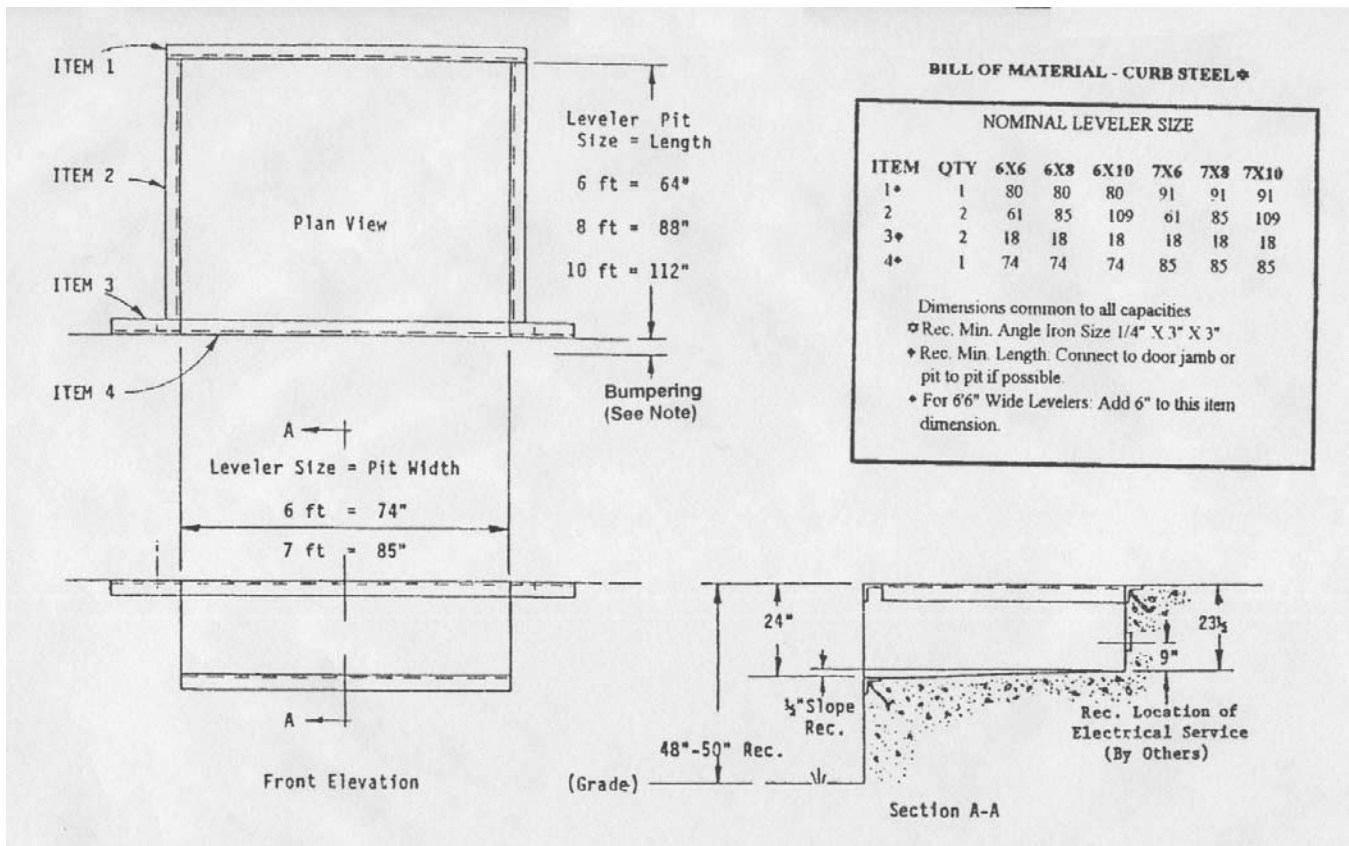
Dock Bumpers: Due to door/dock variances, dock bumpers are not included as standard. 4" thick (min.) bumpers are recommended. Additional bumper thickness may require extended lip projection for dock leveler. Consult seal/shelter supplier, bumper specialist, architect or contractor for requirements.

Safety Consideration:

Fully-hydraulic Operation	Built-in Service Strut
Automatic Emergency Stop	Night Lock Protection
Automatic Storage Control	Fork Lift Slots
Full-range Toe Guards	Pre-tested, Factory Adjusted

Warranty: Coverage provided for two (2) full years from date of installation. Atlantic Engineered Products, L.L.C. will exchange or repair any hydraulic or structural component if found to be defective in manufacture. Dock leveler to meet or exceed OSHA, CS202-56, ANSI MH14.1-84 and ANSI MH30.1-93 standard.

Atlantic Engineered Products, L.L.C. reserves the right to alter details without prior notice or incurring obligation.

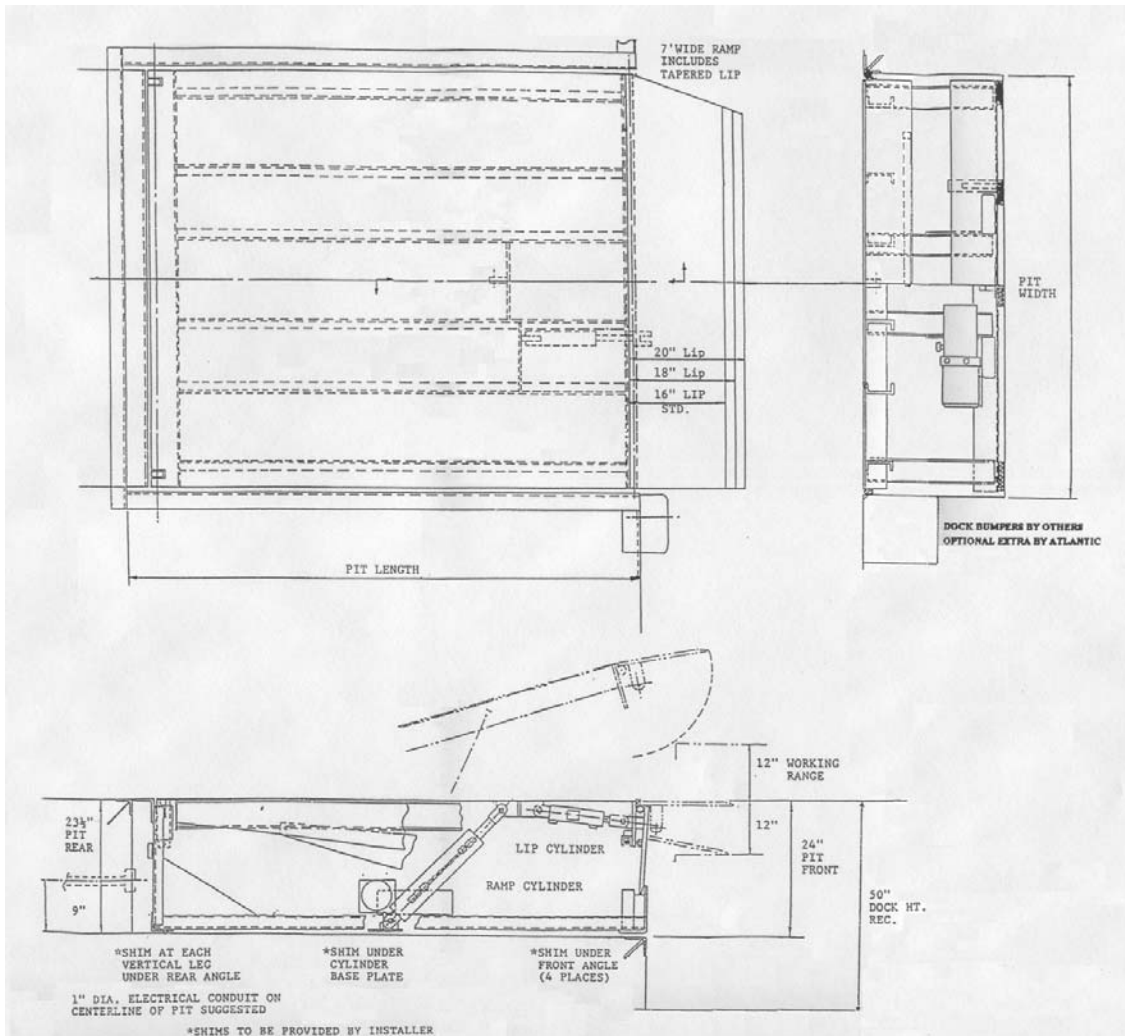


Note: Dock face and leveler protection req'd. Typical dock bumpers projection about 4" with level grade. Depressed drive surface can require additional bumper projection to protect building wall. Bumpers by others. Optional extra by Atlantic.

If grade is cutout to slope down toward building (truck well), dock height should be reduced 4" to 6" as rear truck will approach dock at a lower profile.

Atlantic levelers can be fitted to all existing pits. Advise factory of all overall pit length, width and depth if different than shown.

Hydraulic Dock Leveler Pit Detail



CONSTRUCTION FEATURES

- Structural steel ramp supports
- High yield safety tread ramp and lip plates
- Structural steel base
- Full width lip hinge
- Full width shelf supported rear hinge
- One-piece (full width) hinge pins
- One-piece 8" deep front header
- Reinforced rear hinge mount

OPERATIONAL FEATURES

- Fully automatic regenerative hydraulic system
- No lubrication required
- Automatic safety stop
- Push-button control

Alternate service range, capacities and operational features as needed to accommodate customer requirements.

DIMENSIONAL TABLE

Model	Width	Length
6' X 6'	74"	64"
6' X 8'	74"	88"
6' X 10'	74"	122"
7' X 6'	85"	64"
7' X 8'	85"	88"
7' X 10'	85"	112"

**HS Series
Hydraulic Dock Leveler**