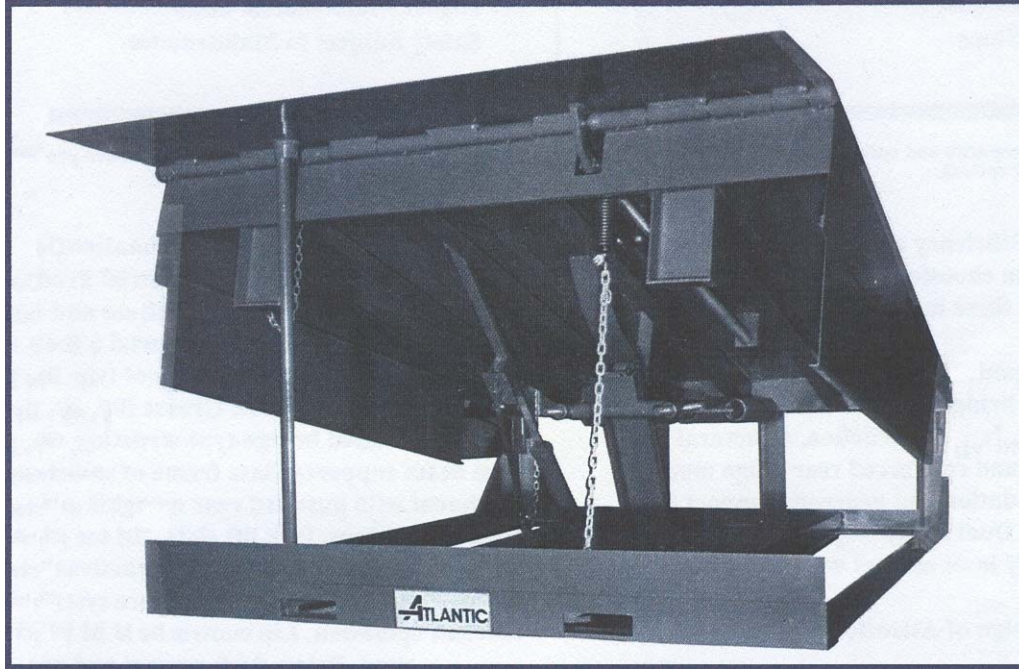


**SIMPLY THE BEST...
SAFER, FASTER, OUTWORKS THE REST**



FEATURES

MULTI-SPRING COUNTERBALANCE SYSTEM

Provides smooth reliable operation

DUAL SAFETY STOPS

Provide positive support

BELOW DOCK CONTROL

Allows low truck service

NIGHT LOCK PROTECTION

Prevents unwanted entry

STRUCTURAL STEEL BEAM SUPPORTS

Provide superior structural integrity

STRUCTURAL STEEL BASE FRAME

Provides a sound bridge structure

FULL WIDTH HINGES

Extra support where abuse is experienced

RIENFORCED REAR HINGE MOUNTS

Provide maximum strength

PERFORMANCE, SAFETY AND VALUE

MECHANICAL SYSTEM COMPARISON

<u>Atlantic Provides</u>	<u>Others Offer</u>
<ul style="list-style-type: none"> Non-Violent Operation E-Z Release – Finger Tip Control Light-Weight Walk-Down – 80 lbs. Min.* Longer Component Life Lower Maintenance Cost Automatic Safety Stop 	<ul style="list-style-type: none"> Slam-Bang Operation Full-fisted Pull Chain Release Excessive Walk-Down Weight Required* Shortened Product Life Higher Maintenance Costs Safety Subject to Maintenance

*Varies with leveler size, capacity and options. Atlantic levelers work with ½ the walk-down weight of some competitors when products are comprised of equal size, weight and options.

Overview:

Quality, Efficiency and Strength are the fundamental factors in choosing a dock leveler. Atlantic Engineering provides these important elements – and more...

The Atlantic Mechanical Dock Leveler is designed to provide an industrial bridge between loading dock and freight carrier. Base frame construction, structural steel beam ramp supports and reinforced rear hinge mounts provide a strong foundation and generous support to handle abusive loads. Dual safety stops provide positive security if lip suddenly loses contact with truck bed while in bridged position.

The advanced design of Atlantic's spring counterbalance operating system provides E-Z Release and reduced walk-down weight requirement to allow minimum operating effort; smooth, non-violent operation; and maximum efficiency. Improved operation affords longer equipment life and reduced service requirements to maximize your investment value and reduce overall cost of equipment ownership.

SPECIFICATIONS: "MS" SERIES

General Description: The "MS" Standard Series Mechanical Dock Leveler, as manufactured by Atlantic Engineered Products, L.L.C., combines a multiple spring counterbalance operating system with E-Z Release finger tip control and Positive Lip Control to allow minimal operating effort and afford maximum efficiency in a mechanically operated Dock Leveler.

DIMENSIONS & MODELS

Model	Width	Length
MS66	6'	6'
MS68	6'	8'
MS61	6'	10'
MS76	7'	6'
MS78	7'	8'
MS71	7'	10'

Capacity range for all models to 40,000 lbs. For information on other sizes or capacities, consult factory.

Operation: The ramp is activated by the release chain control recessed in the rear deck. The hinged lip automatically extends as the ramp raises and is held extended by the Positive Lip Control. After the ramp raises the dock attendant walks the platform down onto the truck bed. When service is completed, the lip automatically returns to stored position. Operating range is 12" above and 12" below dock level.

Construction: Ramp and lip are constructed of high yield 55,000 PSI type safety tread steel plate. Deck plate thickness is 1/4". The ramp is a welded, bridge-type structure with structural steel deck supports and integral toe guards. Continuous spool type lip hinge is seamless tube. Grease fitting are standard. Hinge shafts are one-piece cold drawn steel, full width. Standard lip is 16". Base frame construction is structural steel weldment with gusseted rear uprights and hinge shelf. Ramp is designed to cant 4" with out-of-level truck beds.

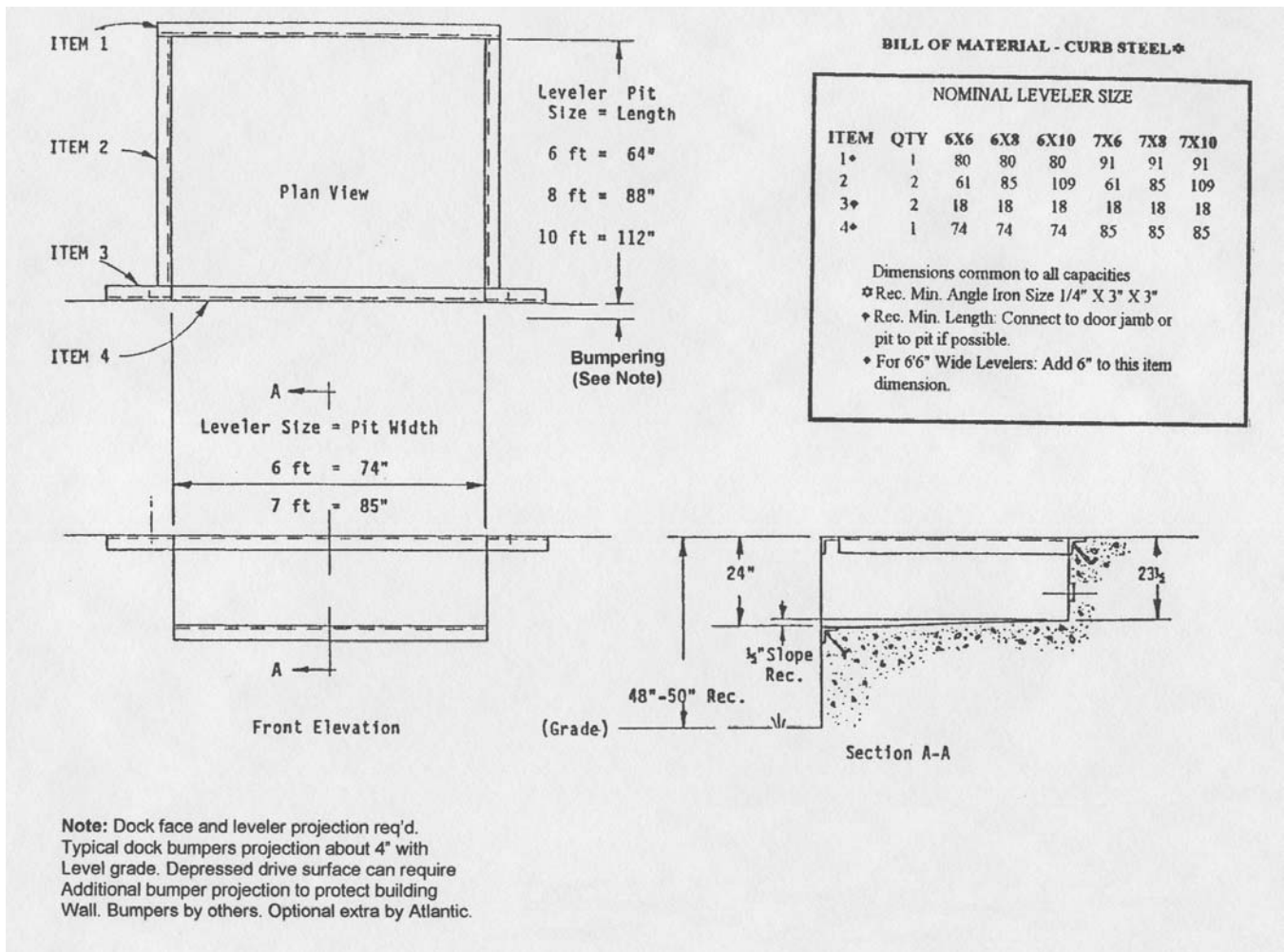
Dock Bumpers: Due to door/dock variances, dock bumpers are not included as standard. 4" thick (min.) bumpers are recommended. Additional bumper thickness may require extended lip projection for dock leveler. Consult seal/shelter supplier, bumper specialist, architect or contractor for requirements.

Safety Consideration:

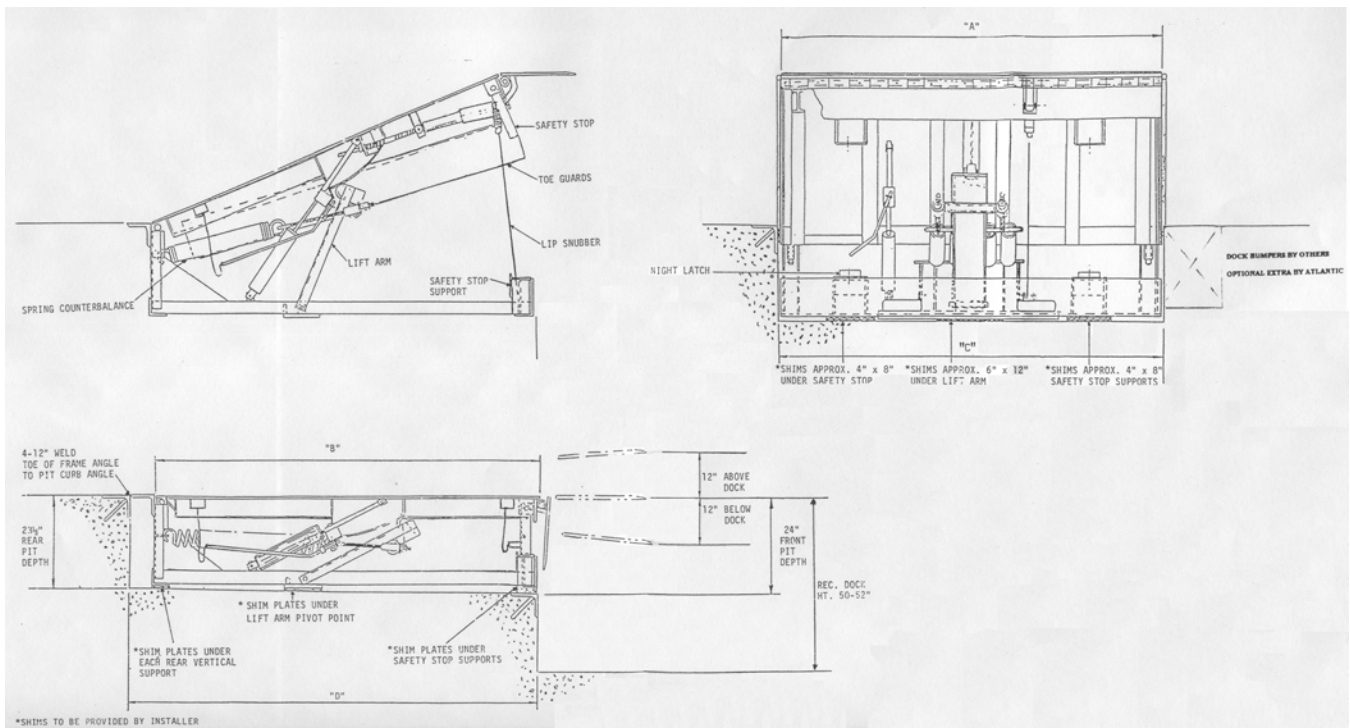
- Cross Traffic Supports
- Positive Lip Control
- Working-range Toe Guards
- Built-in Service Strut
- Night Lock Protection
- Fork Lift Slots
- Pre-tested, Factory Adjusted

Warranty: Coverage provided for one (1) full years from date of installation. Atlantic Engineered Products, L.L.C. will exchange or repair any structural component if found to be defective in manufacture. Dock leveler to meet or exceed OSHA, CS202-56, ANSI MH14.1-84 and ANSI MH30.1-93 standard.

Atlantic Engineered Products, L.L.C. reserves the right to alter details without prior notice or incurring obligation.



Mechanical Dock Leveler Pit Detail



DIMENSIONAL TABLE

Size	A	B	C	D
6' X 6'	72"	59-1/8"	74"	64"
7' X 6'	83"	59-1/8"	85"	64"
6' X 8'	72"	83-1/8"	74"	88"
7' X 8'	83"	83-1/8"	85"	88"
6' X 10'	72"	107-1/8"	74"	112"
7' X 10'	83"	107-1/8"	85"	112"

**MS Series
Hydraulic Dock Leveler**